



GMT Constitutional Area 7, Group C

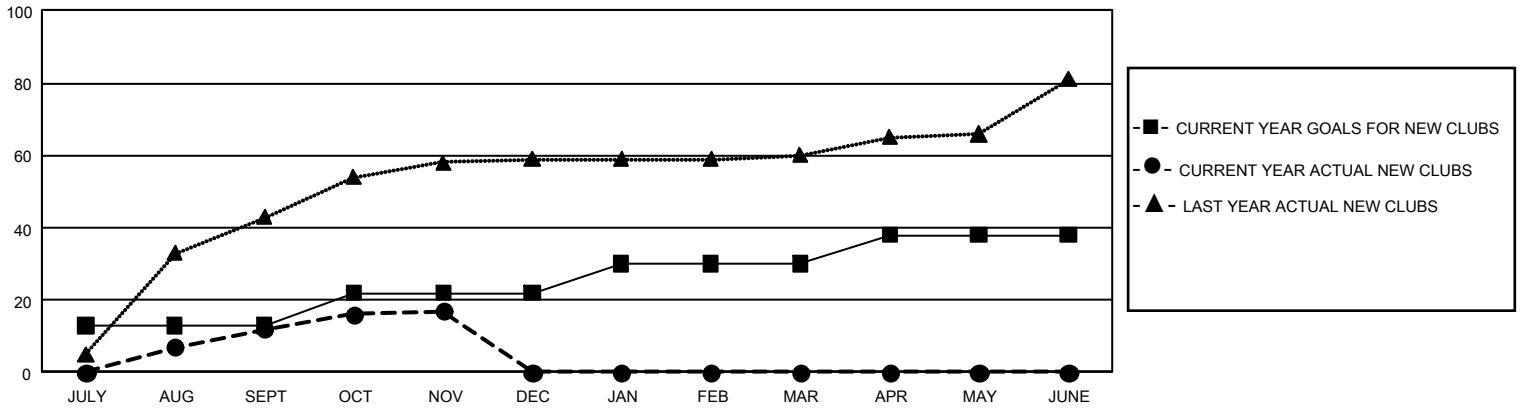
GMT: OPEN

REPORT DOES NOT INCLUDE CLUBS IN UNDISTRICTED AREAS.

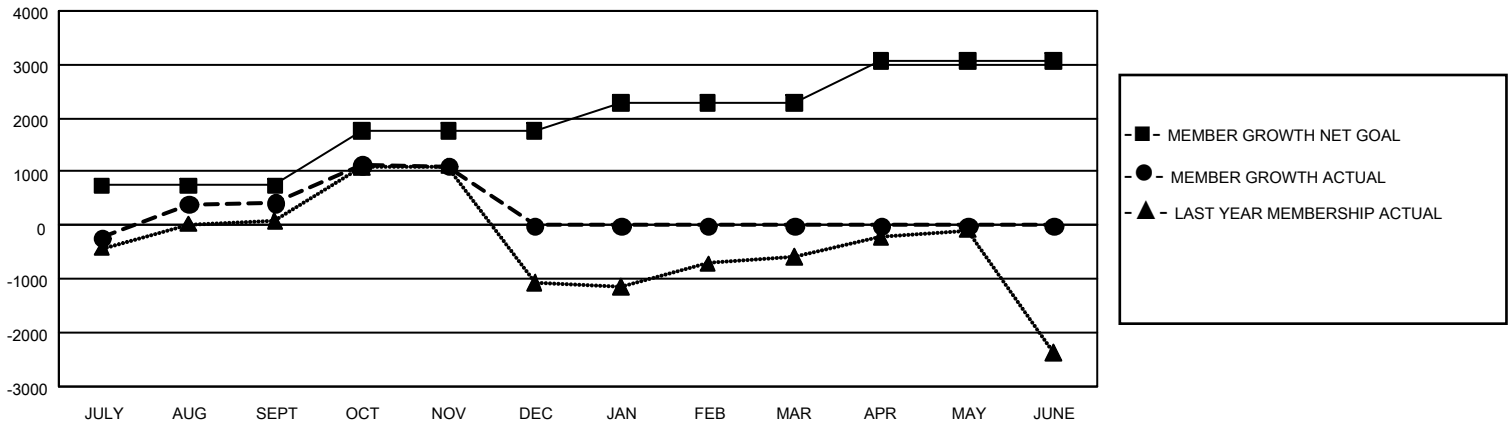
Clubs			
RESULTS FOR 2019-2020			
QUARTER	NEW CLUB GOAL	NEW CLUBS	DROPPED CLUBS
JULY/AUG/SEPT	39	12	24
OCT/NOV/DEC	27	5	4
JAN/FEB/MAR	24	0	0
APR/MAY/JUNE	24	0	0

Members			
RESULTS FOR 2019-2020			
QUARTER	MEMBER GROWTH NET GOAL	MEMBER GROWTH ACTUAL	DROPPED MEMBERS ACTUAL (including transfers)
JULY/AUG/SEPT	2,235	1,255	684
OCT/NOV/DEC	3,030	1,006	317
JAN/FEB/MAR	1,575	0	0
APR/MAY/JUNE	2,370	0	0

GOALS AND ACTUAL NEW CLUBS CUMULATIVE



GOALS AND ACTUAL MEMBERS CUMULATIVE



DROPPED CLUBS: 28	344 CLUBS OF 669 ADDED 1 OR MORE NEW MEMBERS	<u>GENDER DISTRIBUTION</u>	
<u>DROPPED MEMBERS</u>		MALE	10,013 (48.61%)
DECEASED	20	FEMALE	10,585 (51.39%)
CLUB CANCELLED	48	TOTAL FAMILY UNIT MEMBERS 4,540	
OTHER	933		
TOTAL	1,001		
CLICK HERE FOR CUMULATIVE MEMBERSHIP DATA			